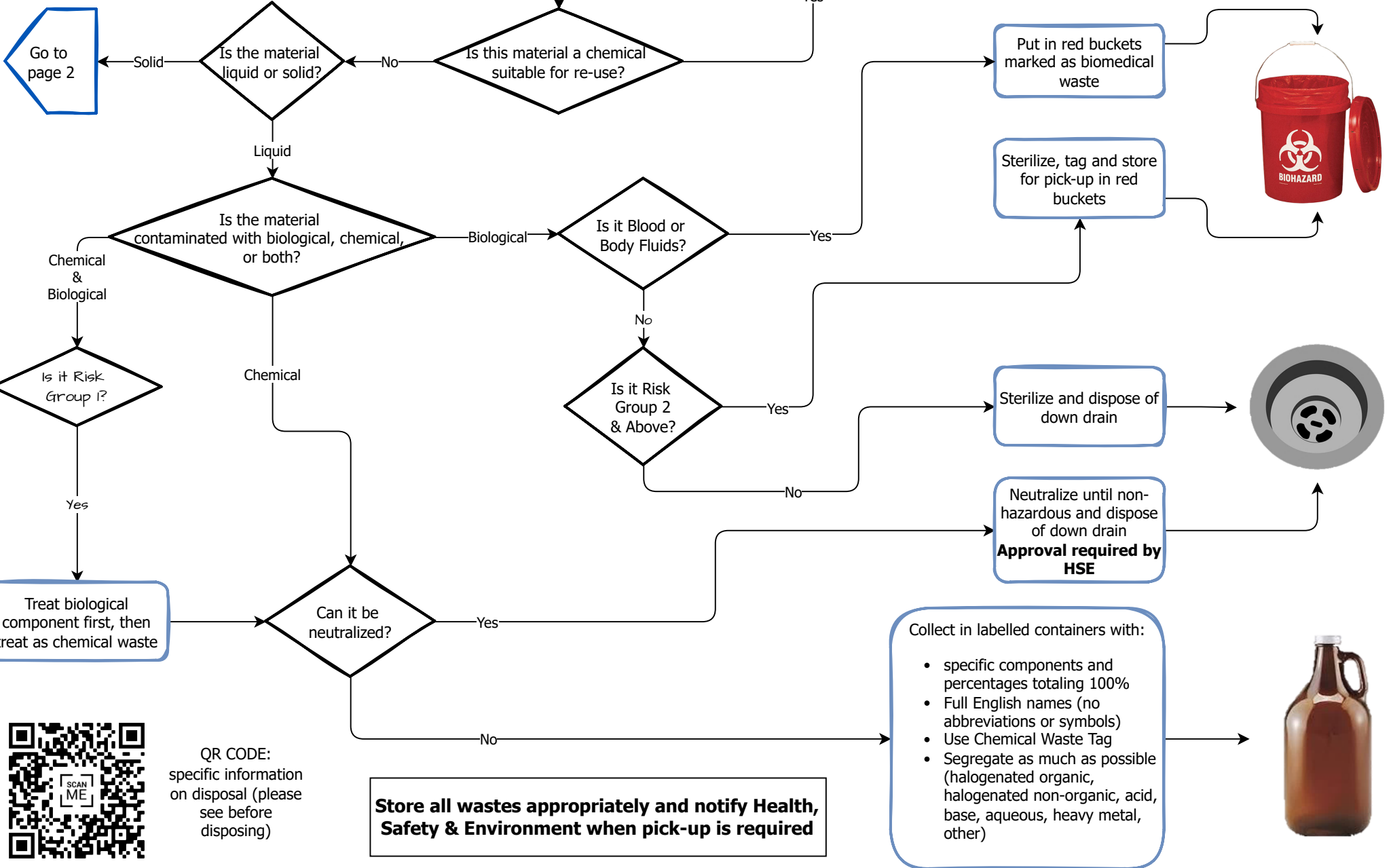




I have laboratory waste to dispose of...
what should I do?

Go to page 2

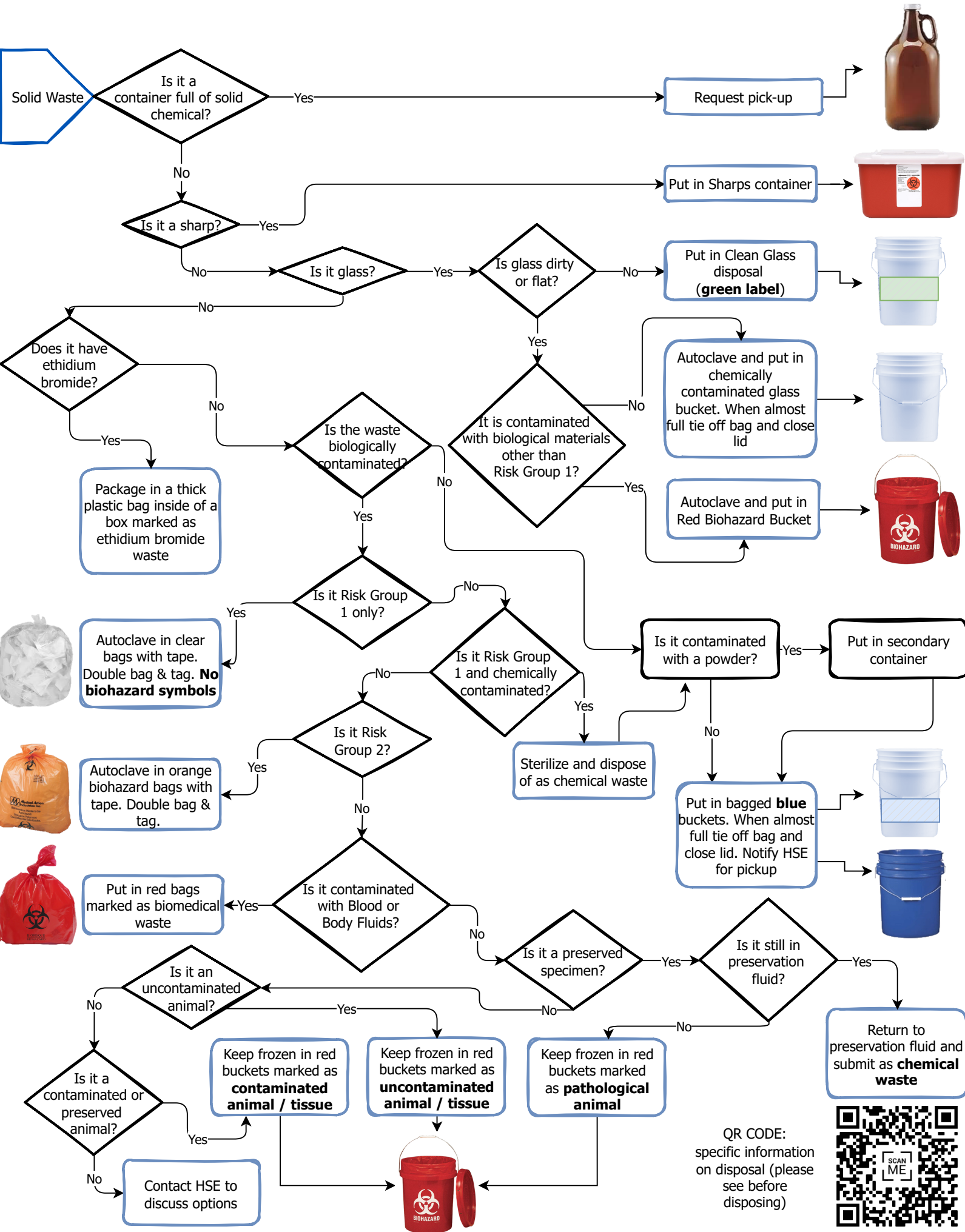


QR CODE:
specific information on disposal (please see before disposing)

Store all wastes appropriately and notify Health, Safety & Environment when pick-up is required

- Collect in labelled containers with:
- specific components and percentages totaling 100%
 - Full English names (no abbreviations or symbols)
 - Use Chemical Waste Tag
 - Segregate as much as possible (halogenated organic, halogenated non-organic, acid, base, aqueous, heavy metal, other)





QR CODE:
specific information
on disposal (please
see before
disposing)

